



Tab B, No. 5(a)  
June 2022

Draft Options for Reef Fish Amendment 54:

# **Greater Amberjack Proposed Management Alternatives**

# Where are we?

- Greater amberjack is overfished and overfishing
  - Required to update rebuilding plan to end overfishing by April 2023
  - All action alternatives in Amendment 54 will reduce harvest levels
  - A draft emergency rule to modify the recreational and commercial seasons in 2023 will be presented to reduce overfishing and prevent large overages and paybacks

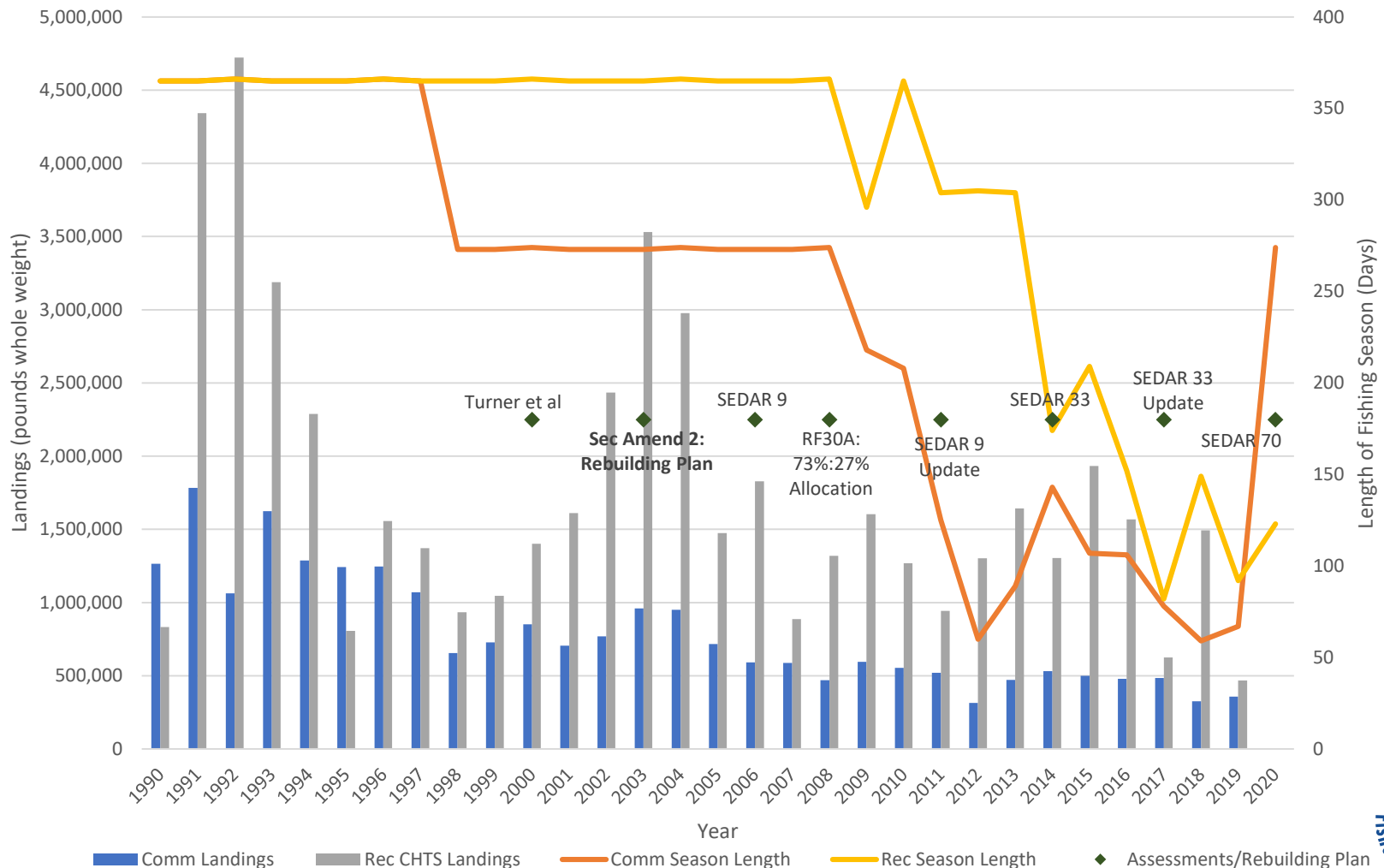


# Proposed Timeline

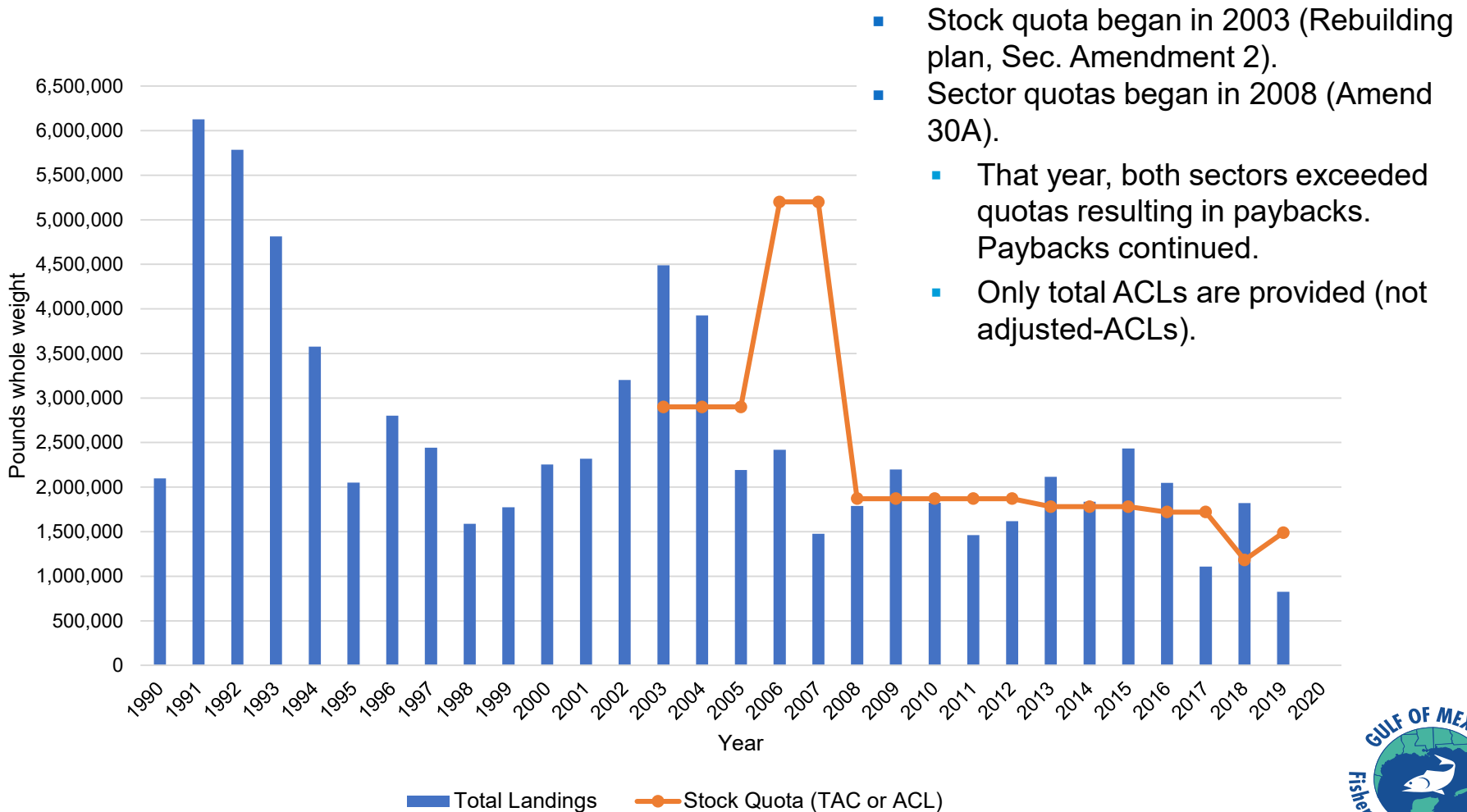
- June 2022:
  - Review revised Amendment 54
  - Review draft Emergency Rule to modify recreational (2022/2023) and commercial fishing seasons (2023)
- August 2022: Review public hearing draft
  - Select Preferred Alternatives
- October 2022: Final Action
- Spring 2023: New regulations in effect



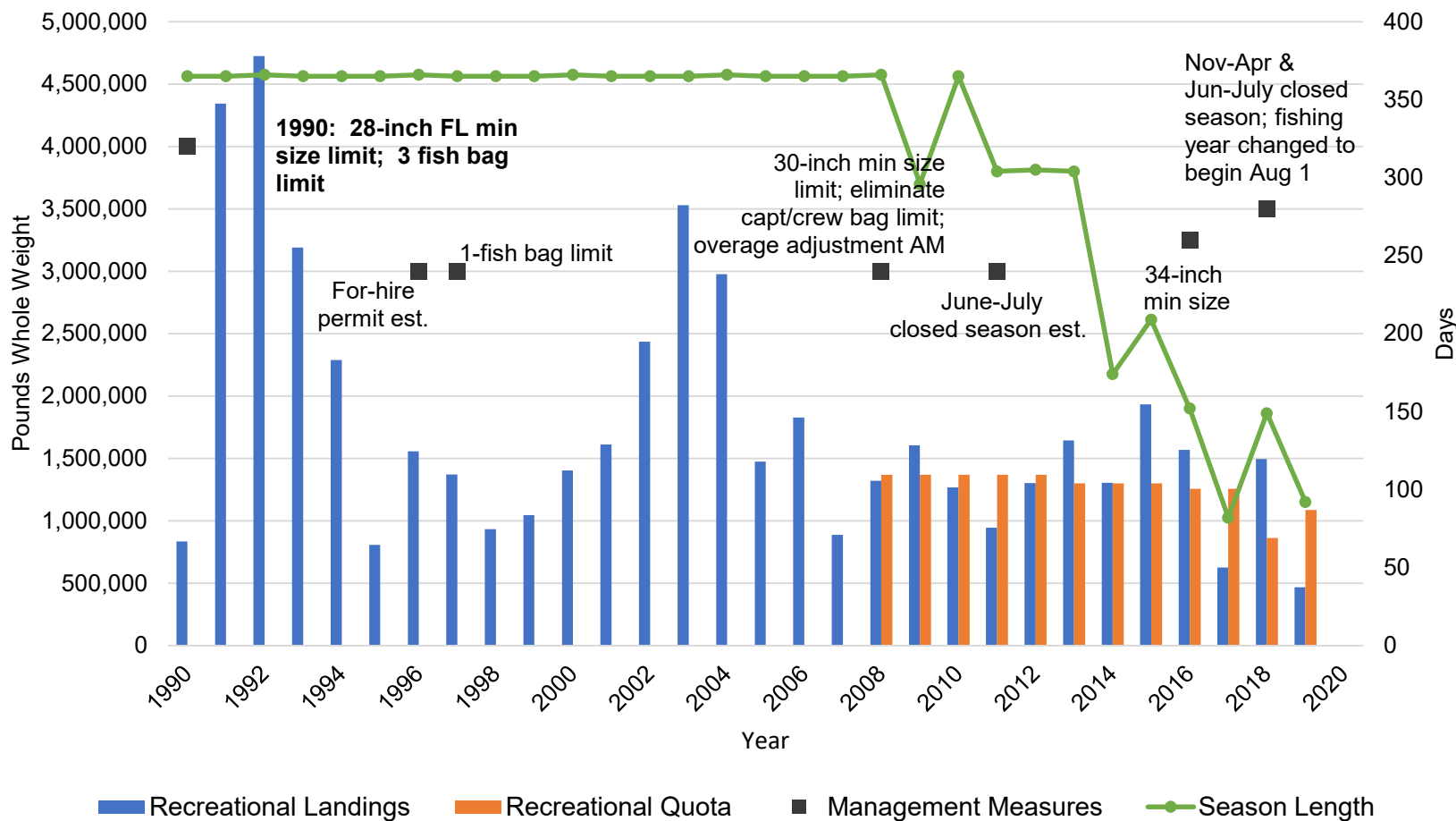
# Sector Landings, Season Lengths, & Assessments



# Quotas and Landings

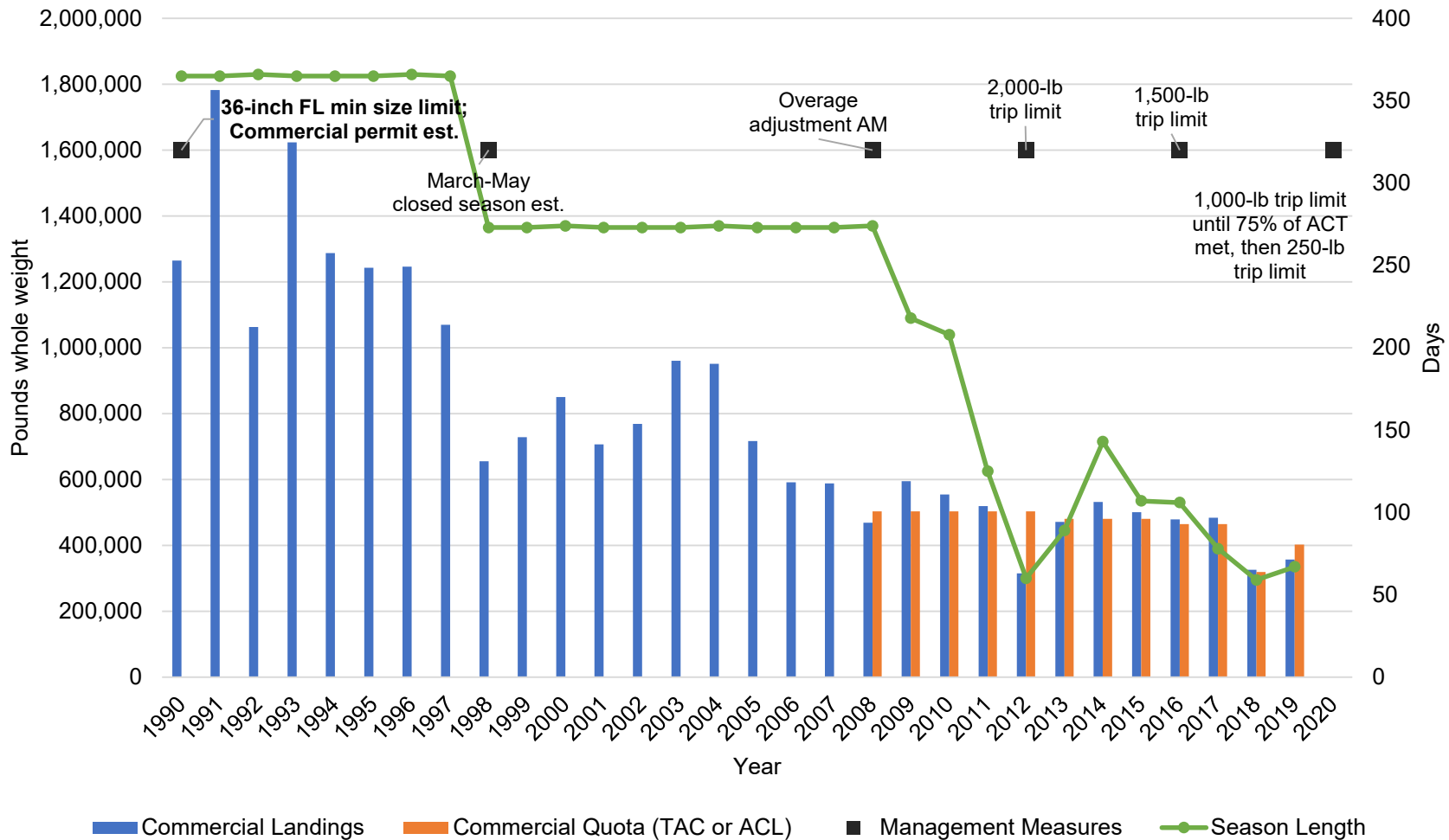


# Recreational: Quotas, Landings, & Management Measures

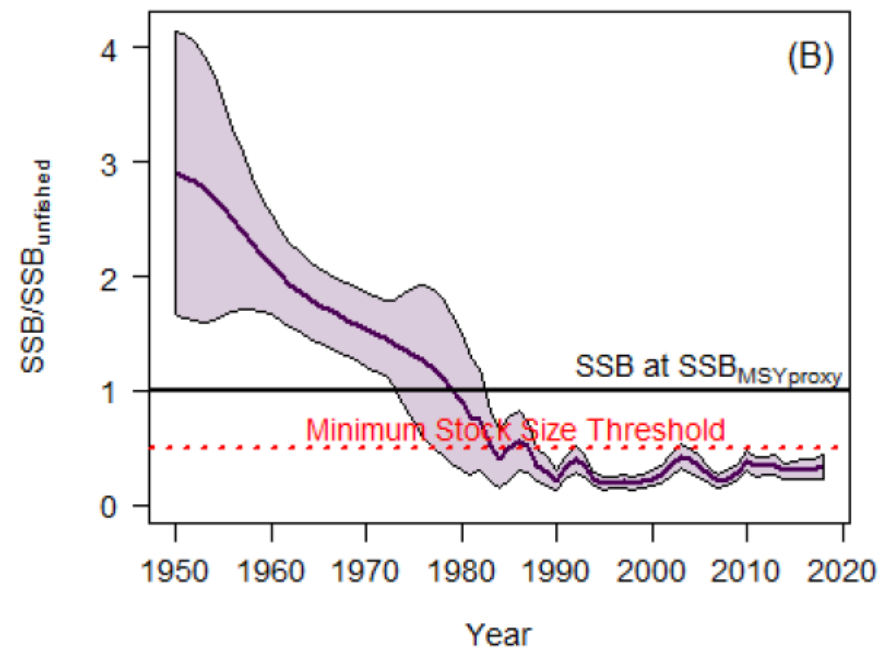
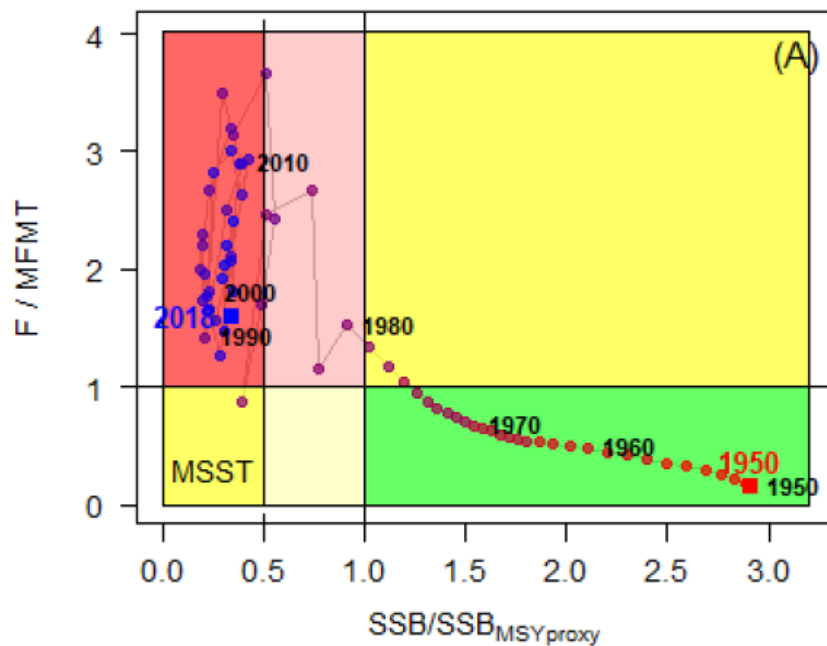


Note: Calendar year is used for landings over entire time series; CHTS units.

# Commercial: Quotas, Landings, & Management Measures



# Background: Stock Status & Biomass



Source: SEDAR 70 Executive Summary





# What's new

- Action 1:
  - Alternative 6 is revised to reflect a constant 24.6% recreational and 75.4% commercial allocation
    - Based on allocation in 2022 with commercial ACL at 484,000 lbs ww
- Action 2: ACT values have been update to reflect changes to Action 1 Alternative 6



# Action 1: Alternative 6

**Alternative 6:** Revise the allocation between the recreational and commercial sectors, such that the commercial ACL is retained at 484,380 lbs ww in 2022 resulting in an allocation equal to 24.4% recreational and 75.6% commercial in 2022. Maintain the recreational allocation at 24.4% recreational and 75.6% commercial thereafter. Set the total stock ACL equal to the ABC.

Year	OFL	ABC	Total ACL	Rec ACL	Com ACL	Allocation (Rec:Com)
<b>2022</b>	2,028,000	641,000	641,000	156,620	484,380	24.4 : 75.6
<b>2023</b>	2,160,000	757,000	757,000	184,963	572,037	24.4 : 75.6
<b>2024</b>	2,265,000	870,000	870,000	212,573	657,427	24.4 : 75.6
<b>2025</b>	2,339,000	970,000	970,000	237,007	732,993	24.4 : 75.6
<b>2026</b>	2,389,000	1,055,000	1,055,000	257,776	797,224	24.4 : 75.6
<b>2027</b>	2,423,000	1,124,000	1,124,000	274,635	849,365	24.4 : 75.6

Values are in pounds whole weight. The recreational portion of the OFL, ABC, total ACL and ACL are based on MRIP-FES data.



# IPT Recommendation

- IPT recommends moving Action 1 Alt. 6 to *Considered but Rejected* as it is inconsistent with the 'Purpose and Need'

The **purpose** of this action is to modify the rebuilding plan and associated catch levels necessary to end overfishing, rebuild the Gulf greater amberjack stock by 2027, and to modify the greater amberjack allocation between the commercial and recreational sectors using the best scientific information available based on the results from the SEDAR 70 stock assessment and subsequent OFL and ABC recommendations from the SSC.

The **need** is to end overfishing and rebuild the greater amberjack stock as required by the Magnuson-Stevens Fishery Conservation and Management Act, update existing greater amberjack catch limits to be consistent with best scientific information available and contemporary data collection methods while ensuring that the historical participation by the recreational and commercial sectors is accurately reflected by the OFL, ABC, and sector ACLs, and that the recreational ACL is consistent with the data used to monitor recreational landings and trigger AMs.

# Next Steps

- June 2022 Council meeting
  - Provide feedback on actions and alternatives
  - Consider virtual or in-person hearings and locations
    - Public hearings would be held between August and October meetings
- At the August 2022 Council meeting:
  - Select Preferred Alternatives
  - Review and consider approving documents for public hearings



# Questions?

---

